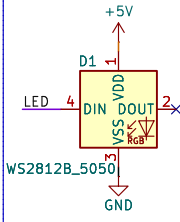
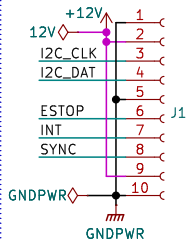


Core Slice Components

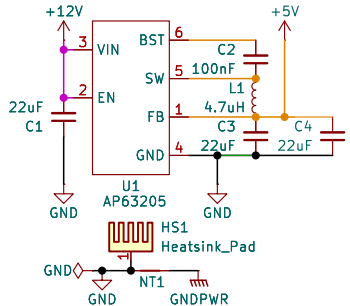
RGB LED



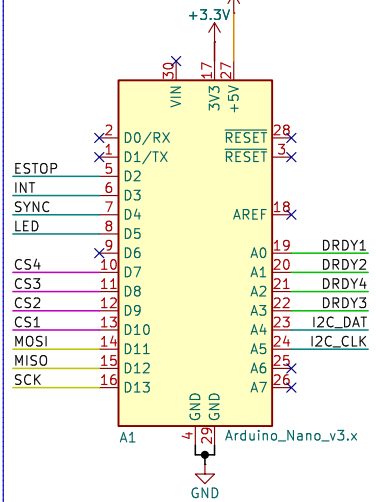
Backplane Conn.



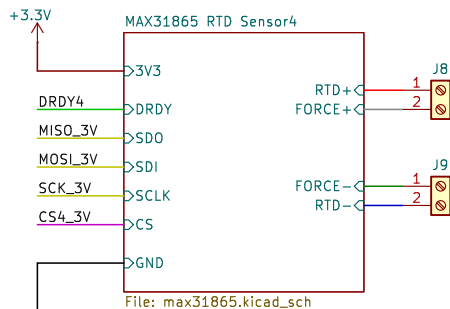
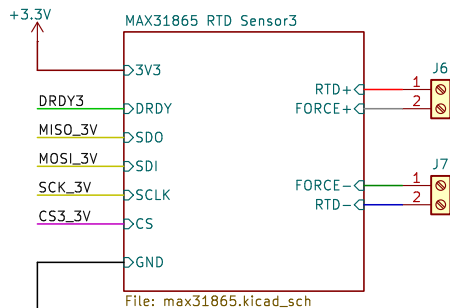
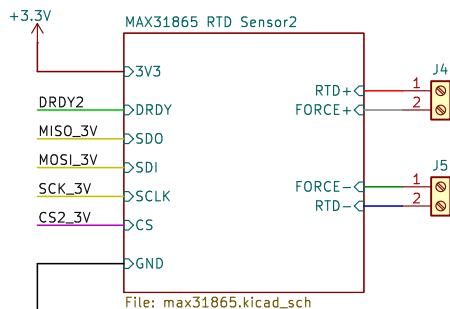
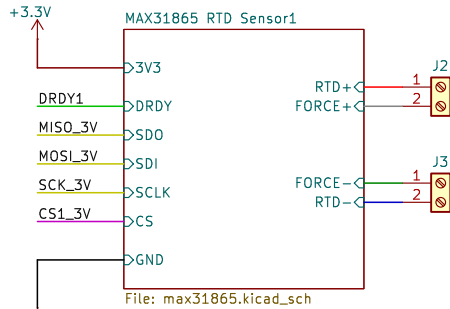
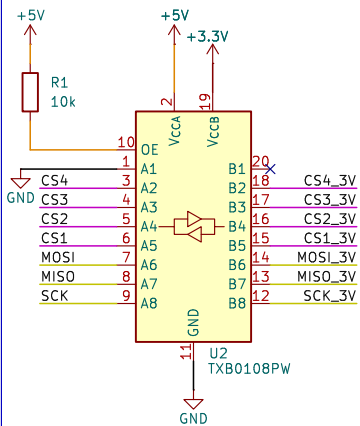
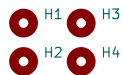
5V Switching Supply



Arduino Nano



Mounting Holes



Sheet: /
File: BREAD_Slice.kicad_sch

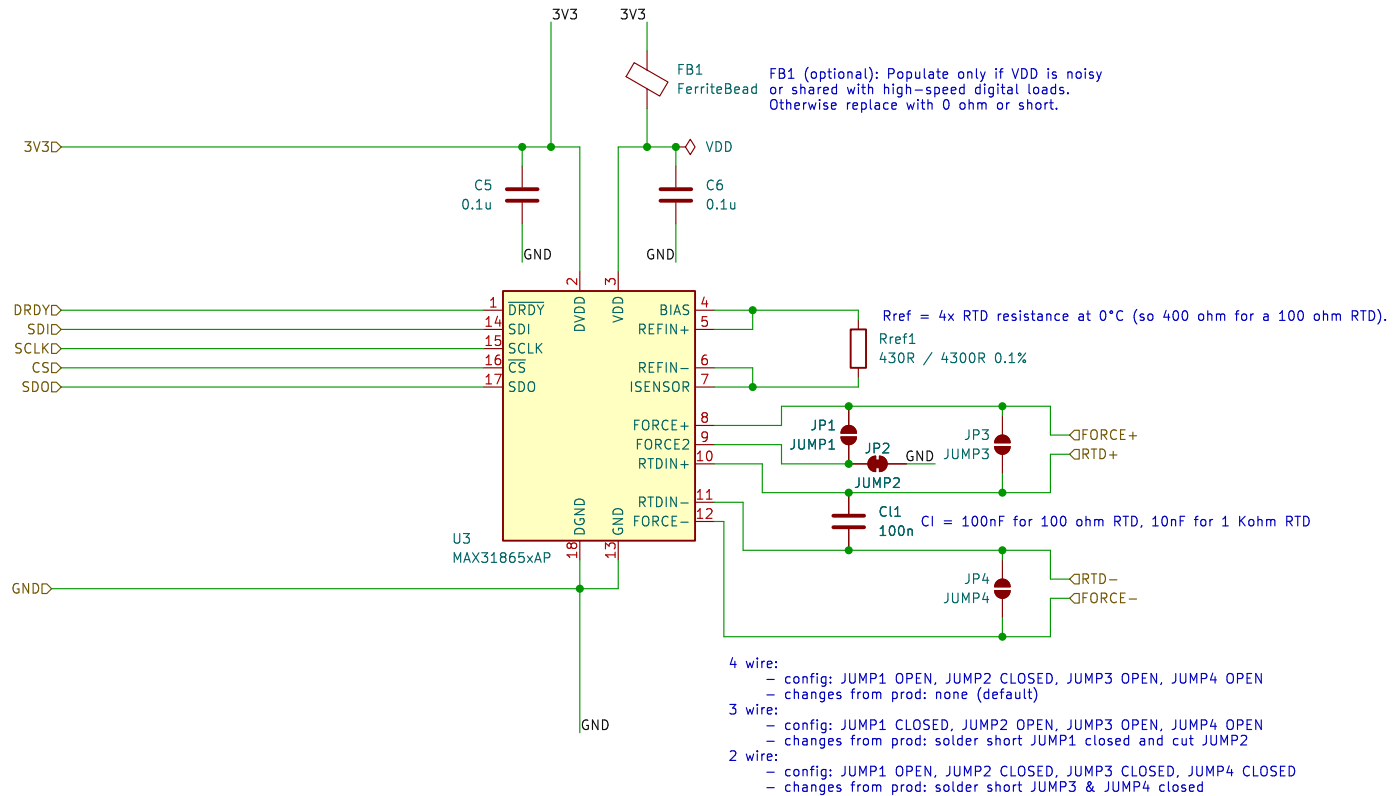
Title:

Size: A4
KiCad E.D.A. 9.0.7

Date:

Rev:

Id: 1/5



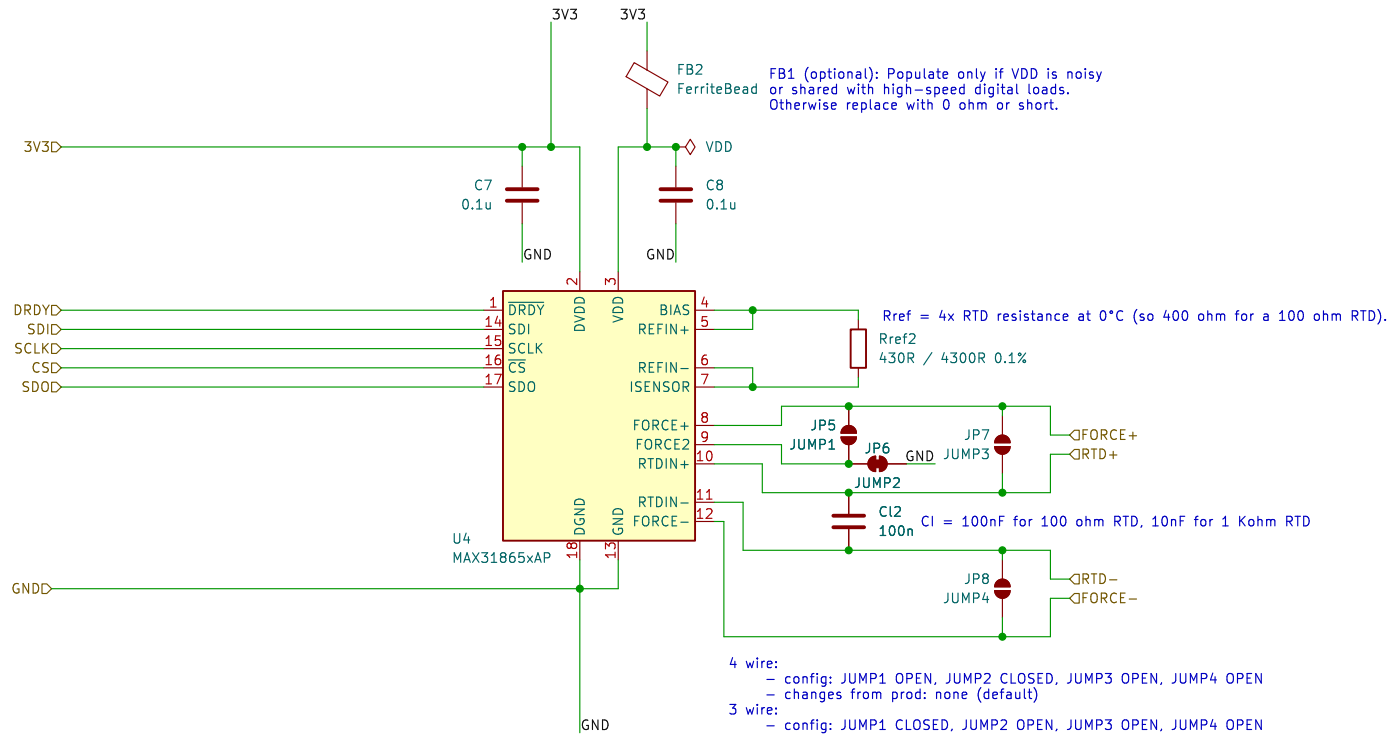
Sheet: /MAX31865 RTD Sensor1/
 File: max31865.kicad_sch

Title:

Size: A4
 KiCad E.D.A. 9.0.7

Date:

Rev:
 Id: 2/5



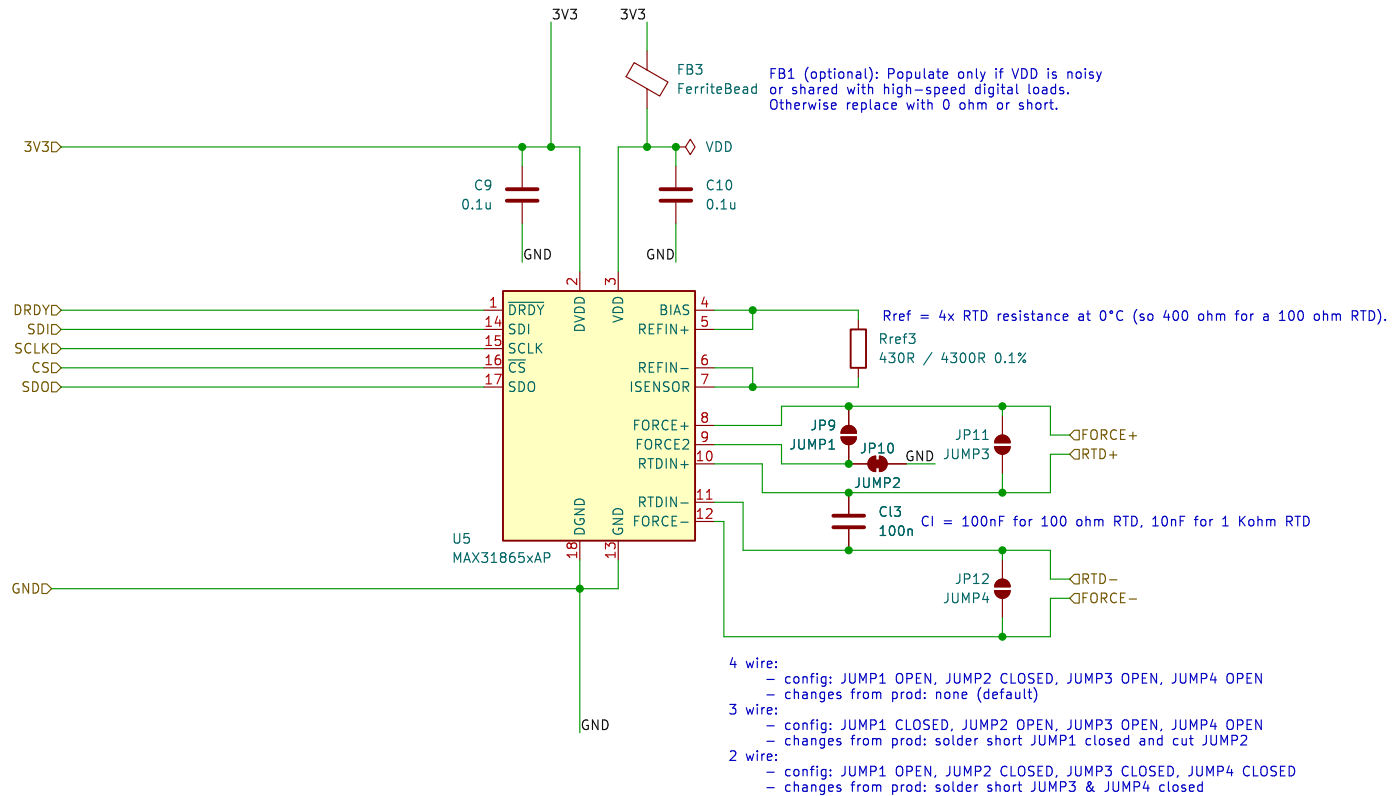
Sheet: /MAX31865 RTD Sensor3/
File: max31865.kicad_sch

Title:

Size: A4
KiCad E.D.A. 9.0.7

Date:

Rev:
Id: 3/5



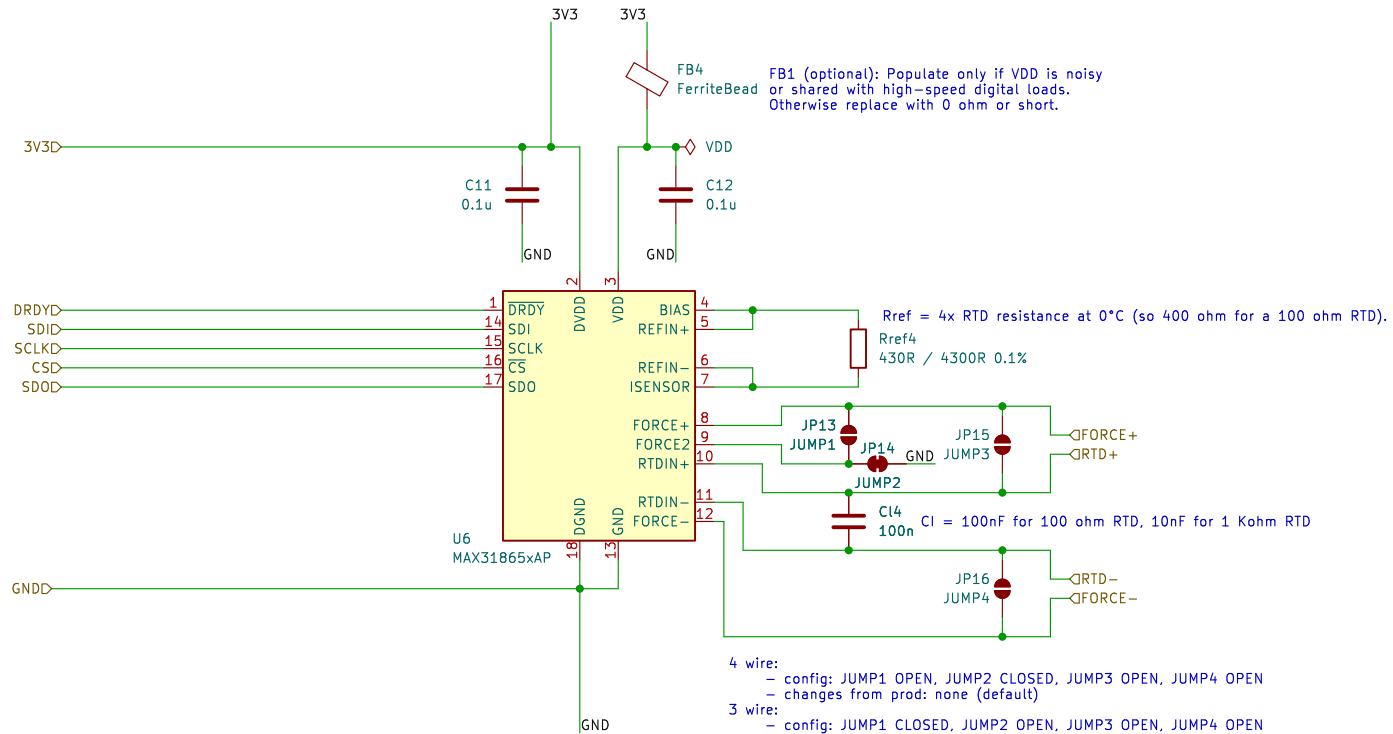
Sheet: /MAX31865 RTD Sensor2/
File: max31865.kicad_sch

Title:

Size: A4
KiCad E.D.A. 9.0.7

Date:

Rev:
Id: 4/5



FB1 (optional): Populate only if VDD is noisy or shared with high-speed digital loads. Otherwise replace with 0 ohm or short.

Rref = 4x RTD resistance at 0°C (so 400 ohm for a 100 ohm RTD).
Rref4
430R / 4300R 0.1%

C4 = 100nF for 100 ohm RTD, 10nF for 1 Kohm RTD

- 4 wire:
 - config: JUMP1 OPEN, JUMP2 CLOSED, JUMP3 OPEN, JUMP4 OPEN
 - changes from prod: none (default)
- 3 wire:
 - config: JUMP1 CLOSED, JUMP2 OPEN, JUMP3 OPEN, JUMP4 OPEN
 - changes from prod: solder short JUMP1 closed and cut JUMP2
- 2 wire:
 - config: JUMP1 OPEN, JUMP2 CLOSED, JUMP3 CLOSED, JUMP4 CLOSED
 - changes from prod: solder short JUMP3 & JUMP4 closed

Sheet: /MAX31865 RTD Sensor4/
 File: max31865.kicad_sch

Title:

Size: A4

Date:

Rev:

KiCad E.D.A. 9.0.7

Id: 5/5